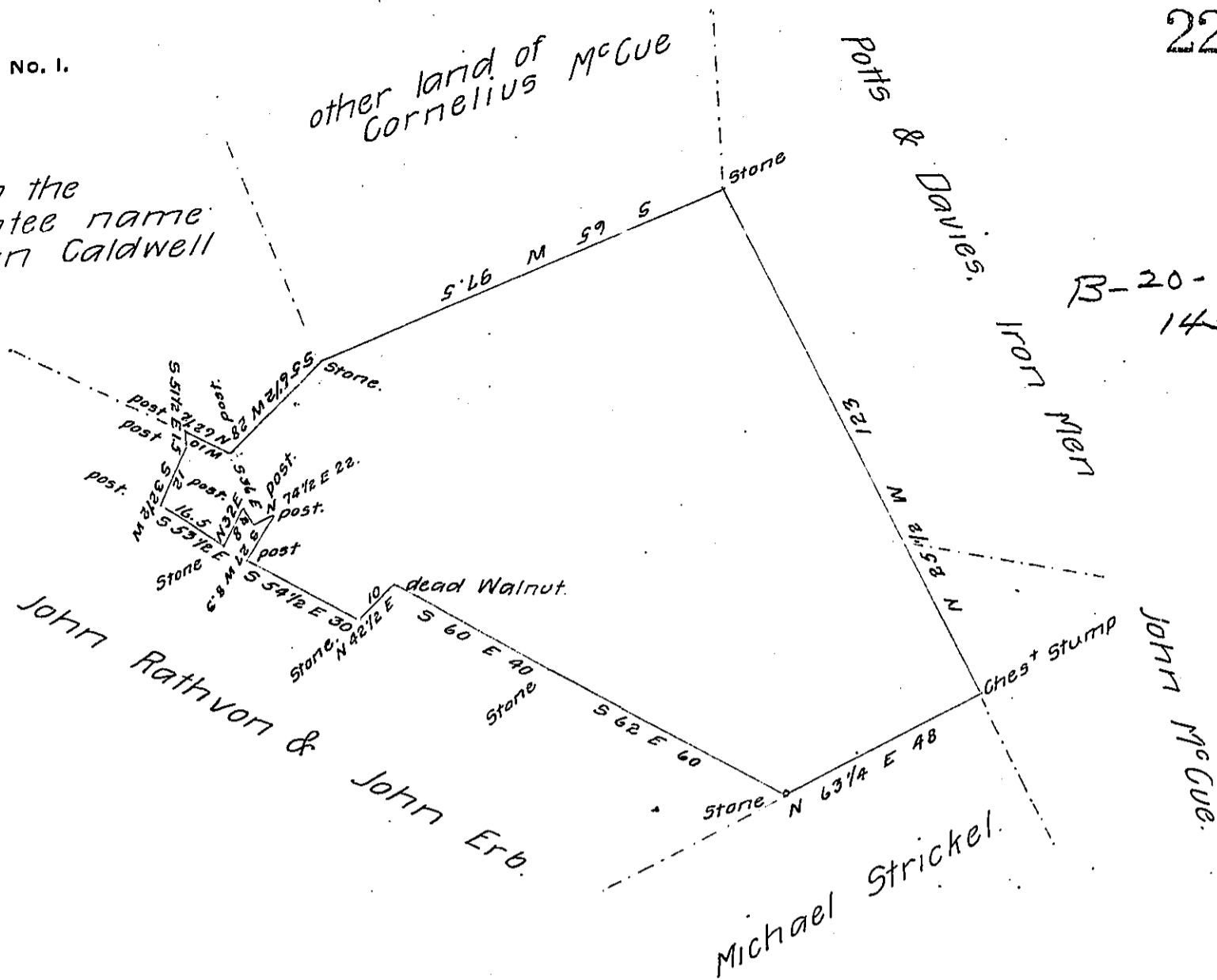


Land in the Warrantee name of John Caldwell

other land of Cornelius McGue



The above Draught represents a tract of land in Martic township Lancaster County, Containing 69 acres 131 perches and the Usual Allowance of six per cent for Roads &c. Surveyed March 14<sup>th</sup> 1867, in pursuance of a Warrant for 65 acres dated February 25<sup>th</sup> 1867, granted to Cornelius McGue & John McGue.

John C. Lewis

To J. M. Campbell.  
Surveyor General.

Approved March 21<sup>st</sup> 1867

A. R. Witmer. Surveyor for  
Lanc. Co.

IN TESTIMONY that the above is a copy of the original remaining on file in the Department of Internal Affairs of Pennsylvania, made conformably to an Act of Assembly approved the 16th day of February, 1833, I have hereunto set my Hand and caused the Seal of said Department to be affixed at Harrisburg, this thirteenth day of June 1906

*George D. Brown*  
Secretary of Internal Affairs.